

STATE OF UTAH STATE ROAD COMMISSION

PLANS OF PROPOSED STATE ROAD

FEDERAL AID PROJECT
WEBER COUNTY

- D-AD - 21(2) ~ LENGTH 0.114 MILES
- D-AD - 20(2) ~ LENGTH 0.429 MILES
- D-AD - 21(2) ~ R.R. AGREEMENT

FED. ROAD DIST. NO.	STATE	FED. AID PROJ. NO.	FISCAL YEAR	SHEET NO.	TOTAL SHEETS
UT.	UTAH	D-AD 21(2)	POSTWAR	1	
"	"	D-AD 20(2)	"	1	
"	"	D-AD 21(2)	"	1	
"	"	D-AD 22(2)	"	1	

INDEX TO SHEETS D-AD - 21(2)

SHEET NO.	DESCRIPTION	STATION
1	TITLE SHEET	
2	GRADE SHEET AND TYPICAL SECTION	
3-4	STD. HIGHWAY SIGNS	8-95, 142
X - SECTIONS		

INDEX TO SHEETS D-AD - 20(2)

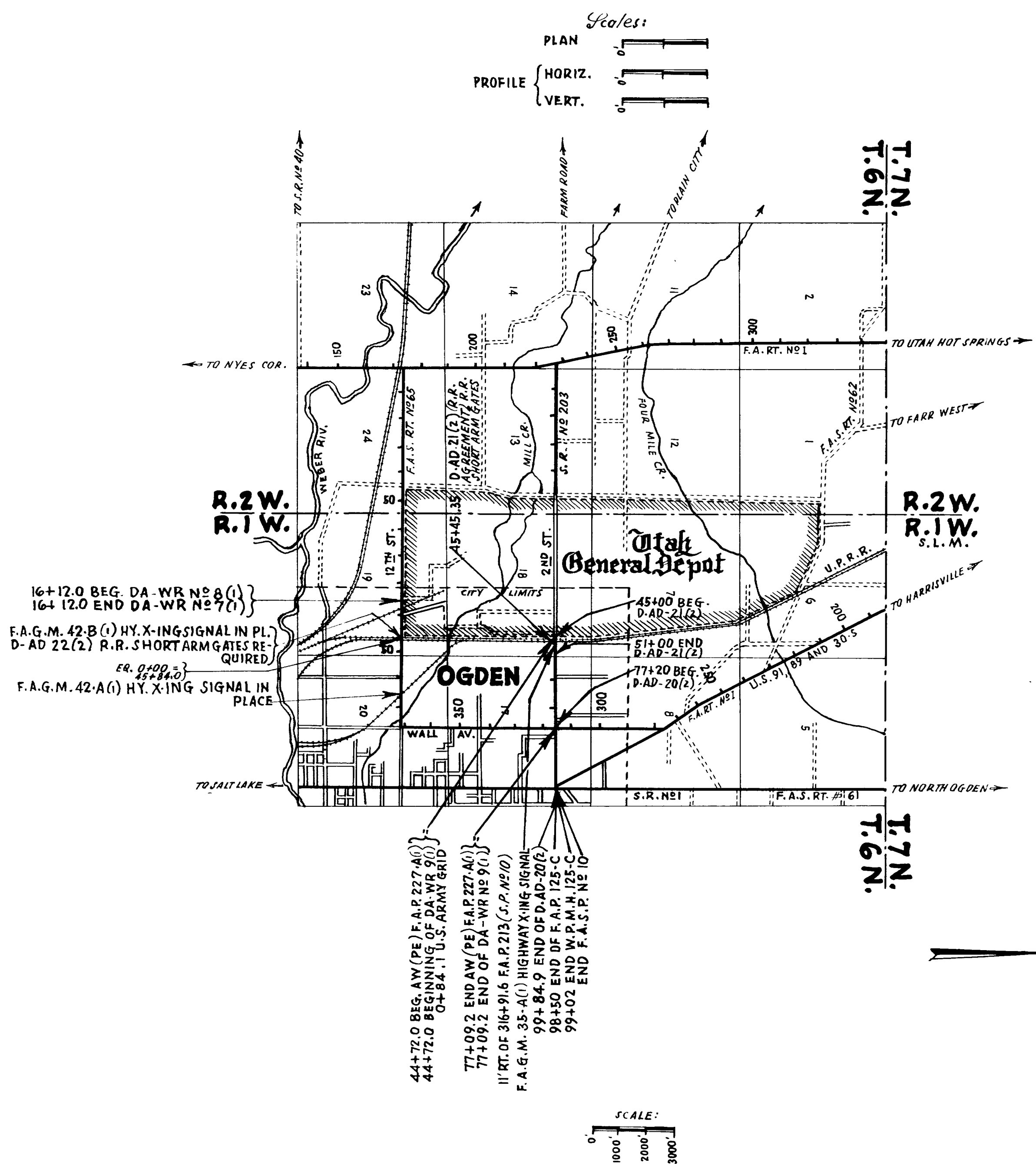
SHEET	DESCRIPTION	DRAWING	STATION
1	TITLE SHEET		
2	TYPICAL SECTION		
3	PLAN & PROFILE		
4-5	STD. HIGHWAY SIGNS	8-95, 142	
X - SECTIONS			

INDEX TO SHEETS D-AD-21(2) R.R. AGREEMENT

SHEET	DESCRIPTION	DRAWING	STATION
1	TITLE SHEET		
2	SITUATION PLAN		
3	HIGHWAY X-ING SIGNAL DETAILS	U.P.R.R. C-3766	
4-6	LOCATION AND CIRCUIT PLAN	" C-4446	

INDEX TO SHEETS D-AD 22(2)

SHEET	DESCRIPTION	DRAWING	STATION
1	TITLE SHEET		
2	SITUATION PLAN		
3	HY. X-ING SIGNAL DETAILS	U.P.R.R. C-3766	
4-5	LOCATION AND CIRCUIT PLAN	" C-4446	



16+12.0 BEG. DA-WR NO 8(1)
16+12.0 END DA-WR NO 7(1)
F.A.G.M. 42-B(1) HY. X-ING SIGNAL IN PLACE
D-AD 22(2) R.R. SHORT ARM GATES REQUIRED
ER. 0+00 - 45+84.0
F.A.G.M. 42-A(1) HY. X-ING SIGNAL IN PLACE

44+72.0 BEG. AV (PE) F.A.P. 227-40
44+72.0 BEG. AV (PE) F.A.P. 227-40
77+09.2 END OF DA-WR NO 9(1)
11 RT. OF 316+91.5 F.A.P. 213 (G.P. NO 10)
F.A.G.M. 35-A(1) HIGHWAY X-ING SIGNAL
99+84.0 END OF D-AD-20(2)
99+150 END OF F.A.P. 125-C
99+150 END W.P.M. 125-C
99+02 END F.A.S.P. NO 10

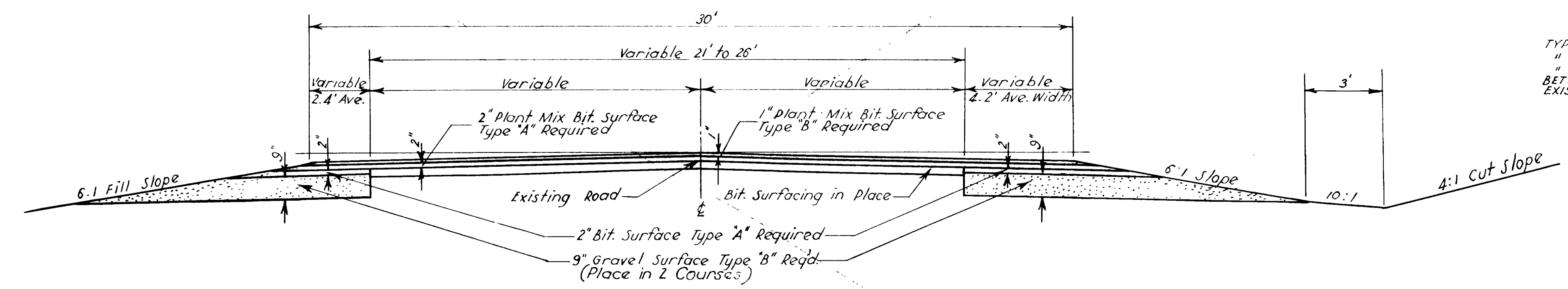
APPROVED JULY 1955
STATE ROAD COMMISSION OF UTAH
Ed. Johnson
CHIEF ENGINEER

DEPARTMENT OF COMMERCE
BUREAU OF PUBLIC ROADS

APPROVED _____
DISTRICT ENGINEER DATE _____

TYPICAL CROSS SECTION

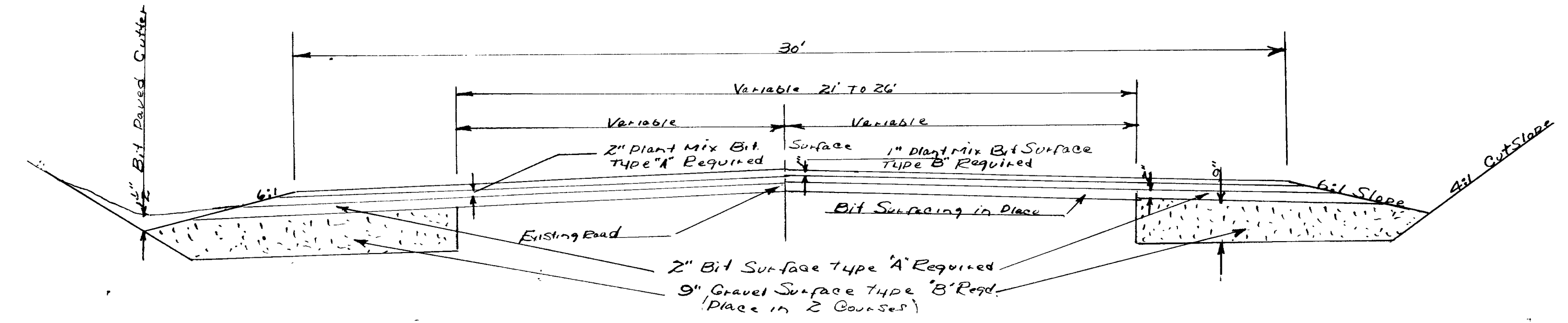
FED. ROAD DIST. NO.	STATE	PROJ. NO.	FISCAL YEAR	SHEET NO.	TOTAL SHEETS
UTAH	UTAH	DA0-200	POST WAR	2	



BIT. MATERIAL
 TYPE 120-150 PENETRATION, REQUIRED IN MIX
 " MC-1 OR MC-2 REQ'D. FOR PRIME COAT
 " RC-1 " RC-2 " " SEAL "
 BETWEEN COURSES OF PLANT MIX & OVER
 EXISTING SURFACE (WHEN DIRECTED BY THE ENGINEER)

NOTE: Grade & Gravel Driveways as directed

STA. 77+20 TO STA. 84+9



REVISIONS
 DATE BY

UTAH STATE ROAD COMMISSION
 SALT LAKE CITY UTAH

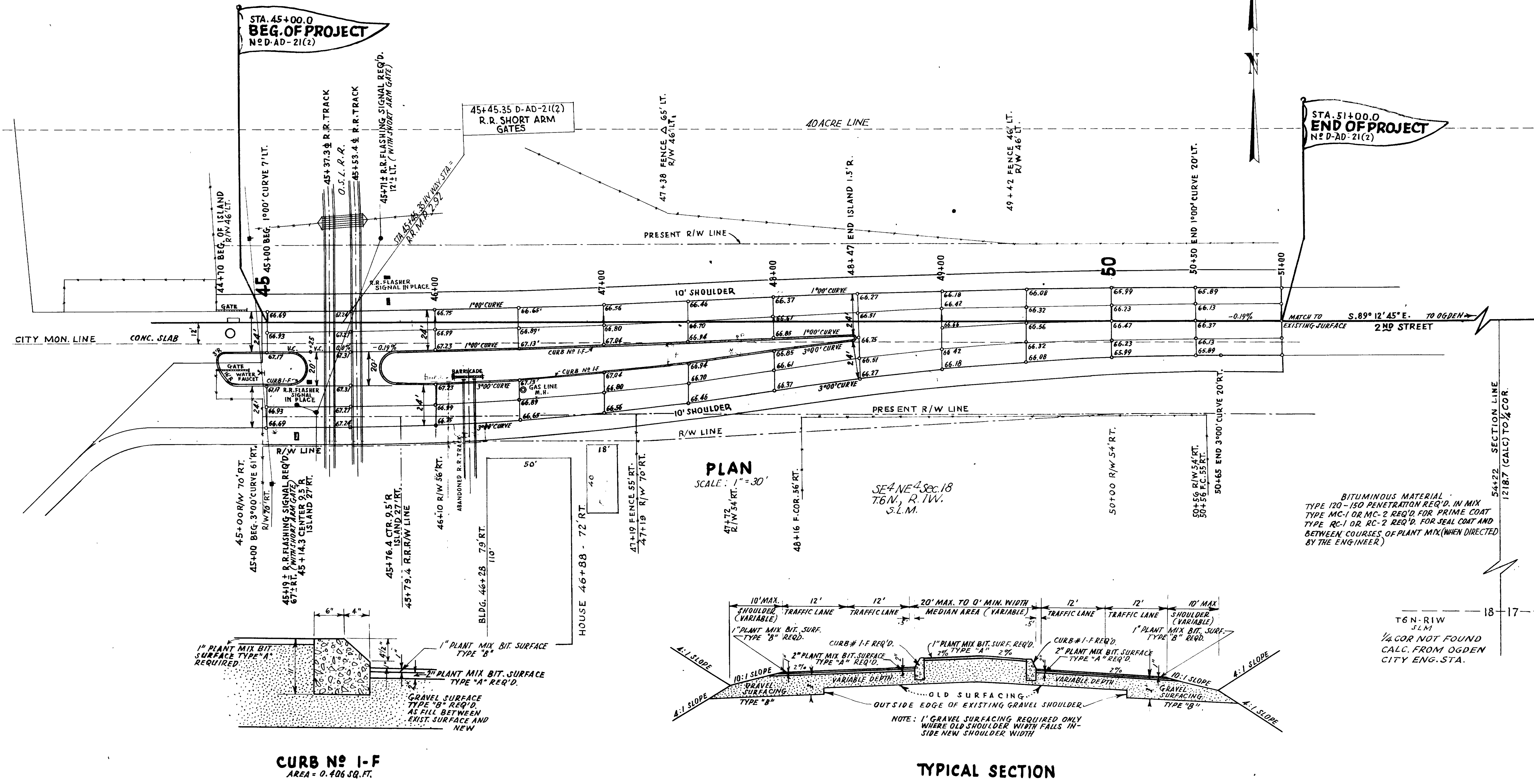
PLANT MIX BIT SURFACED ROADWAY

DESIGN SPEED M.P.H.

STATION	IN PLACE	REQUIRED	REMARKS	DRAWING
45+19±		R.R. SHORT ARM GATE - 67'± RT.		UPPER C-3766-FIG A
45+71±	R.R. FLASHER SIGNAL	R.R. SHORT ARM GATE - 12'± LT.	SALVAGE EXIST. SIGNAL	SC-2446 (3515)
45+25±	"	"	"	"

FED. ROAD DIST. NO.	STATE	FED. AID PROJ. NO.	FISCAL YEAR	SHEET NO.	TOTAL SHEETS
UT.	UTAH	D-AD-21(2)	POSTWAR	2	4
"	"	D-AD-21(2)		2	6

R.R. Agreement



REVISIONS

NO.	DATE	BY	DESCRIPTION

BITUMINOUS MATERIAL:
 TYPE 120-150 PENETRATION REQ'D. IN MIX
 TYPE MC-1 OR MC-2 REQ'D. FOR PRIME COAT
 TYPE RC-1 OR RC-2 REQ'D. FOR SEAL COAT AND
 BETWEEN COURSES OF PLANT MIX (WHEN DIRECTED
 BY THE ENGINEER)

T6N-R1W
 S.L.M.
 1/4 COR NOT FOUND
 CALC. FROM OGDEN
 CITY ENG. STA.

SHEET 2 OF 4 SHEET 10

UTAH STATE ROAD COMMISSION
 SALT LAKE CITY, UTAH

DESIGNED BY	
CHECKED BY	
DATE	
PROJECT NO.	

5

TURN SIGN
YELLOW BACKGROUND WITH BLACK ARROW 12" HIGH AND 12" BLACK BORDER.

SLOW
YELLOW BACKGROUND WITH BLACK LETTERS AND 12" BLACK BORDER.

SHARP CURVE
YELLOW BACKGROUND WITH BLACK ARROW 12" HIGH AND 12" BLACK BORDER.

ROUGH ROAD
YELLOW BACKGROUND WITH BLACK LETTERS AND 12" BLACK BORDER.

BRIDGE OUT
YELLOW BACKGROUND WITH BLACK LETTERS AND 12" BLACK BORDER.

FRESH OIL
YELLOW BACKGROUND WITH BLACK LETTERS AND 12" BLACK BORDER.

DETOUR
WHITE BACKGROUND WITH BLACK LETTERS AND 12" BLACK BORDER.

END DETOUR
WHITE BACKGROUND WITH BLACK LETTERS AND 12" BLACK BORDER.

STOP
YELLOW BACKGROUND WITH BLACK LETTERS AND 12" BLACK BORDER.

UTAH 47
WHITE BACKGROUND WITH BLACK LETTER AND 12" BLACK BORDER.

UTAH 91
WHITE BACKGROUND WITH BLACK LETTER AND 12" BLACK BORDER.

GENERAL NOTES:
ALL SIGNS SHALL BE PAINTED WITH WHITE BACKGROUND UNLESS OTHERWISE SPECIFIED AS CONTAINED IN THE UTAH STATE ROAD COMMISSION'S SPECIFICATIONS FOR ROAD SIGNS. ALL SIGNS SHALL BE PAINTED WITH WHITE BACKGROUND UNLESS OTHERWISE SPECIFIED AS CONTAINED IN THE UTAH STATE ROAD COMMISSION'S SPECIFICATIONS FOR ROAD SIGNS. ALL SIGNS SHALL BE PAINTED WITH WHITE BACKGROUND UNLESS OTHERWISE SPECIFIED AS CONTAINED IN THE UTAH STATE ROAD COMMISSION'S SPECIFICATIONS FOR ROAD SIGNS.

UTAH STATE ROAD COMMISSION
STANDARD ROAD SIGNS
1958-59

STATE ROAD CONSTRUCTION NEXT 10 MILES
WHITE BACKGROUND WITH BLACK LETTERS, SERIES NO. 12" INSET AND 12" BLACK BORDER.

CONSTRUCTION ZONE
WHITE BACKGROUND WITH 7" BLACK LETTERS, SERIES NO. 12" INSET AND 12" BLACK BORDER.

END OF CONSTRUCTION
WHITE BACKGROUND WITH 7" BLACK LETTERS, SERIES NO. 12" INSET AND 12" BLACK BORDER.

TRUCK CROSSING
YELLOW BACKGROUND WITH BLACK LETTERS, SERIES NO. 12" INSET AND 12" BLACK BORDER.

DETOUR
WHITE BACKGROUND WITH BLACK LETTERS, SERIES NO. 12" INSET AND 12" BLACK BORDER.

DETOUR ARROW
WHITE BACKGROUND WITH BLACK ARROW 12" HIGH AND 12" BLACK BORDER.

BARRICADE
BARRICADE AND WINGS TO BE PAINTED YELLOW (2 COATS) - BARRICADE WINGS SHALL BE REFLECTORIZED WITH 8" X 8" AREA REFLECTORIZED PANEL WITH DIAGONALLY ALTERNATE STRIPES OF BROWN AND BLACK PAINT. EACH STRIP 3/4" WIDE, OR WITH NO. 70P-1 EXTERNAL BOTTOMS SET AT 4" CENTERS PLACED ON CENTER LINE OF BARRICADE WINGS.

SIGN LOCATION AND HEIGHT IN RURAL AREAS
SIGN POSTS TO BE PAINTED WHITE (2 COATS).
SIGN SHALL BE PAINTED WITH 2 COATS OF BLACK HEAVY RESISTANT PAINT.

GENERAL NOTES:
ALL SIGNS SHALL BE PAINTED WITH WHITE BACKGROUND UNLESS OTHERWISE SPECIFIED AS CONTAINED IN THE UTAH STATE ROAD COMMISSION'S SPECIFICATIONS FOR ROAD SIGNS. ALL SIGNS SHALL BE PAINTED WITH WHITE BACKGROUND UNLESS OTHERWISE SPECIFIED AS CONTAINED IN THE UTAH STATE ROAD COMMISSION'S SPECIFICATIONS FOR ROAD SIGNS.

UTAH STATE ROAD COMMISSION
STANDARD ROAD SIGNS
METHOD OF INSTALLATION
1958-59